



Series C55 DC-Link Polypropylene Capacitors

Features: Flame retardant to UL94, extended metalized film, dry connection, plastic casing, tinned copper nut terminals, stable performance, high reliability, small volume, convenient installation.

Applications: Single IGBT switch components of small current welder < 400A

Specifications

1) Operating Temperature

-40°C to 85°C.

2) Capacitance

2 x 10 μ F; 2 x 16 μ F; 2 x 30 μ F.

3) Rated Voltage

400 VDC.

4) Tolerance

\pm 5%.

5) Test Voltage Between Terminals

650V (DC) 60s

6) Test Voltage Between Terminals and Case

2000VAC 10s.

7) Dissipation Factor

0.1% max at 25°C \pm 5°C

8) Insulation Resistance

5000 M Ω · μ F min, at 100 VDC, 25°C \pm 5°C, 60s.

9) Effective Current ($\Delta T < 25^\circ\text{C}$)

20A; 30A; 40A.

10) Equivalent Series Resistance

<2.3m Ω ; <1.8m Ω ; <1.6m Ω .

11) Stray Inductance

\leq 20nH

12) Life Expectancy

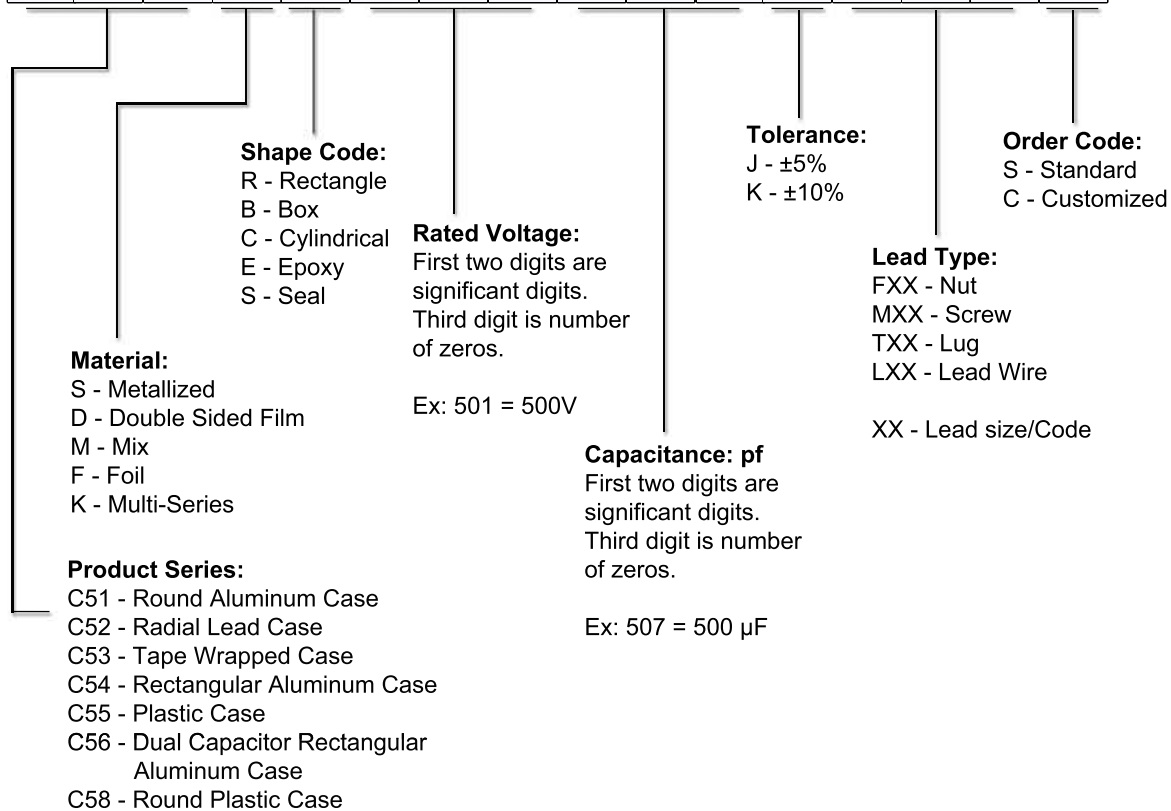
200000h at rated DC voltage and 70°C.

13) Reference Standards

GB/T 17702, IEC 61071

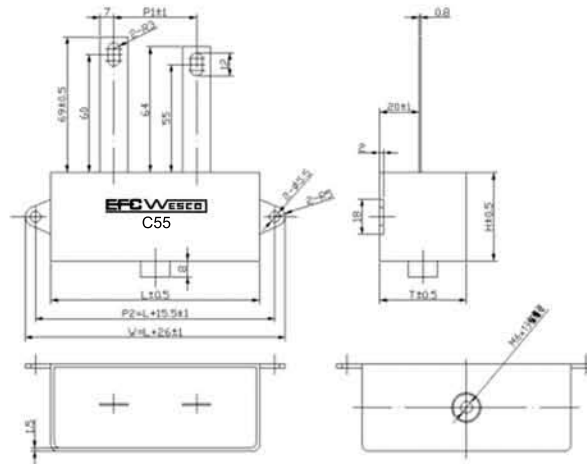
DC Link Nomenclature

C 5 1 S C 5 0 1 5 0 7 K T X X C



C55 Plastic Case

DC Link Polypropylene Capacitors



Dimensions and Ratings

| Cap. | 400 VDC | | | | | | |
|--------|-----------------|----------------|------|------|------|-------|-------------------|
| μF | Part # | Dimension (mm) | | | (mm) | | Lead Type |
| | | L | W | H | P1 | P2 | |
| 2 x 10 | C55SB4012x10KT# | 76.0 | 31.0 | 35.5 | 26.7 | 91.5 | Tinned Copper Lug |
| 2 x 16 | C55SB4012x16KT# | 105.5 | 43.0 | 32.0 | 42.0 | 120.5 | Tinned Copper Lug |
| 2 x 30 | C55SB4012x30KT# | 105.5 | 43.5 | 45.0 | 28.0 | 120.5 | Tinned Copper Lug |